

- Description: • The cylinders are particularly suitable for lighter duties.
- Operating pressure: • Max 10 bar (145 psi).
- Operating temperature: • Standard.
- Options: • High temperature.
• Low temperature.
- Applications: • Packaging, food and textile industries.
- Advantages: • Sealed for life and pre lubricated with food grade grease.
- Benefits: • Non-lube operation.

P1A - Double acting with buffer cushioning



43 Parker DirectLink

Part number	Stroke	Bore	Rod end
P1A-S010DS-0010	10	10	M4
P1A-S010DS-0025	25	10	M4
P1A-S010DS-0050	50	10	M4
P1A-S012DS-0010	10	12	M6
P1A-S012DS-0025	25	12	M6
P1A-S012DS-0050	50	12	M6
P1A-S016DS-0010	10	16	M6
P1A-S016DS-0025	25	16	M6
P1A-S016DS-0050	50	16	M6
P1A-S020DS-0010	10	20	M8
P1A-S020DS-0025	25	20	M8
P1A-S020DS-0050	50	20	M8
P1A-S025DS-0010	10	25	M10x1.25
P1A-S025DS-0025	25	25	M10x1.25
P1A-S025DS-0050	50	25	M10x1.25

P1A - Single acting non adjustable cushioning with spring return



43 Parker DirectLink

Part number	Stroke	Bore	Rod end
P1A-S010SS-0010	10	10	M4
P1A-S010SS-0025	25	10	M4
P1A-S012SS-0010	10	12	M6
P1A-S012SS-0025	25	12	M6
P1A-S016SS-0010	10	16	M6
P1A-S016SS-0025	25	16	M6
P1A-S020SS-0010	10	20	M8
P1A-S020SS-0025	25	20	M8
P1A-S025SS-0010	10	25	M10x1.25
P1A-S025SS-0025	25	25	M10x1.25

P8S - Electronic Sensors - 10 - 30V AC/DC



43 Parker DirectLink

Part number	Weight kg	Output / Function	Cable / connector
P8S-GPFLX	0.03	PNP type, normally open	3 m PVC-cable without connector

2

PNEUMATICS

P8S - Reed Sensors - 10 - 30V AC/DC



43 Parker DirectLink

Part number	Weight kg	Output / Function	Cable / connector
P8S-GSFLX	0.03	Normally open	3 m PVC-cable without connector

Description:	<ul style="list-style-type: none"> The cylinders are double-acting, with a new design of air cushioning. The light, stiff body extrusion has sensor grooves for simple and protected sensor installation.
Operating pressure:	<ul style="list-style-type: none"> Max 10 bar (145 psi).
Operating temperature:	<ul style="list-style-type: none"> Standard: From -20°C to +80°C. High temperature: From -10°C to +150°C. Low temperature: From -40°C to +40°C.
Advantages:	<ul style="list-style-type: none"> High performance cylinder with corrosion resistant design.
Benefits:	<ul style="list-style-type: none"> Long service life.

P1D - Standard - Double acting



42 Parker DirectLink

Part number	Thread BSPP	Stroke	Bore	Rod end
P1D-S032MS-0025	1/8	25	32	M10x1.25
P1D-S032MS-0050	1/8	50	32	M10x1.25
P1D-S032MS-0080	1/8	80	32	M10x1.25
P1D-S032MS-0100	1/8	100	32	M10x1.25
P1D-S040MS-0025	1/4	25	40	M12x1.25
P1D-S040MS-0050	1/4	50	40	M12x1.25
P1D-S040MS-0080	1/4	80	40	M12x1.25
P1D-S040MS-0100	1/4	100	40	M12x1.25
P1D-S050MS-0025	1/4	25	50	M16x1.5
P1D-S050MS-0050	1/4	50	50	M16x1.5
P1D-S050MS-0080	1/4	80	50	M16x1.5
P1D-S050MS-0100	1/4	100	50	M16x1.5
P1D-S063MS-0025	3/8	25	63	M16x1.5
P1D-S063MS-0050	3/8	50	63	M16x1.5
P1D-S063MS-0080	3/8	80	63	M16x1.5
P1D-S063MS-0100	3/8	100	63	M16x1.5
P1D-S080MS-0025	3/8	25	80	M20x1.5
P1D-S080MS-0050	3/8	50	80	M20x1.5
P1D-S080MS-0080	3/8	80	80	M20x1.5
P1D-S080MS-0100	3/8	100	80	M20x1.5
P1D-S100MS-0025	1/2	25	100	M20x1.5
P1D-S100MS-0050	1/2	50	100	M20x1.5
P1D-S100MS-0080	1/2	80	100	M20x1.5
P1D-S100MS-0100	1/2	100	100	M20x1.5

P1D - Seal kits



42 Parker DirectLink

Part number	Cylinder bore
Cylinder version standard	mm
P1D-S, P1D-T, P1D-C, P1D-F	
P1D-6KRN	32
P1D-6LRN	40
P1D-6MRN	50
P1D-6NRN	63
P1D-6PRN	80
P1D-6QRN	100
P1D-6RRN	125

- | | |
|------------------------|--|
| Description: | <ul style="list-style-type: none"> The cylinders are double-acting. The cylinder profile has grooves in which, depending on stroke length, one or more magnetic switches can be mounted for sensing the end positions or intermediate positions of the magnetic piston. |
| Operating pressure: | <ul style="list-style-type: none"> Max 10 bar (145 psi). |
| Operating temperature: | <ul style="list-style-type: none"> Standard: From -20°C to +80°C. High temperature: From -10°C to +150°C. Operation at temperatures below 0°C to be confirmed. |
| Advantages: | <ul style="list-style-type: none"> High performance cylinder for contactless position sensing. |
| Benefits: | <ul style="list-style-type: none"> Long service life. |

NZ - Pneumatic Compact ISO Cylinders, Double Acting, Bore 12 - 50 mm



141 Parker Direct Link

Part number	Thread BSPP	Stroke	Bore	Rod end
PA67920-0005	1/8	5	12	M10x1.25
PA67920-0010	1/8	10	12	M10x1.25
PA67920-0015	1/8	15	12	M10x1.25
PA67920-0020	1/8	20	12	M10x1.25
PA67920-0025	1/4	25	12	M12x1.25
PA67920-0030	1/4	30	12	M12x1.25
PA67920-0040	1/4	40	12	M12x1.25
PA67930-0005	-	5	16	-
PA67930-0010	-	10	16	-
PA67930-0015	-	15	16	-
PA67930-0020	-	20	16	-
PA67930-0025	-	25	16	-
PA67930-0030	-	30	16	-
PA67930-0040	-	40	16	-
PA67940-0005	-	5	20	-
PA67940-0010	-	10	20	-
PA67940-0015	-	15	20	-
PA67940-0020	-	20	20	-
PA67940-0025	-	25	20	-
PA67940-0030	-	30	20	-
PA67940-0040	-	40	20	-
PA67940-0050	-	50	20	-
PA67950-0005	-	5	25	-
PA67950-0010	-	10	25	-
PA67950-0015	-	15	25	-
PA67950-0020	-	20	25	-
PA67950-0025	-	25	25	-
PA67950-0030	-	30	25	-
PA67950-0040	-	40	25	-
PA67950-0050	-	50	25	-

Mountings for NZ Compact ISO Cylinder, Bore 12 - 25

Part number	Details	Bore
KL5510	Foot mounting	12-16
KL5511	Foot mounting	20
KL5512	Foot mounting	25
KL5513	Rear trunnion mounting	12-16
KL5514	Rear trunnion mounting	20
KL5515	Rear trunnion mounting	25
KL5516	Flange mounting	12-16
KL5517	Flange mounting	20
KL5518	Flange mounting	25
KL6020	Piston rod clevis	12-16
KY6132	Piston rod clevis	20
KY6145	Piston rod clevis	25
KL1026	Compensating coupling	12-16
KY1126	Compensating coupling	20
KY1127	Compensating coupling	25
KL6022	Piston rod eye	12-16
KY6144	Piston rod eye	20
KY6145	Piston rod eye	25

2

PNEUMATICS



P1A-RC - Rod clevis - ISO 8140



45 Parker DirectLink

Part number	Rod end	Cylinder bore	
		mm	(Pin dia) mm
P1A-4CRC	M4	10	4
P1A-4DRC	M6	12, 16	6
P1A-4HRC	M8	20	8
P1A-4JRC	M10x1.25	25	10

P1A-RS - Swivel rod eye - ISO 8139



45 Parker DirectLink

Part number	Rod end	Cylinder bore
		mm
P1A-4CRS	M4	10
P1A-4DRS	M6	12, 16
P1A-4HRS	M8	20
P1A-4JRS	M10x1.25	25

P1A-MB - 8 Flange



45 Parker DirectLink

Part number	Cylinder bore
	mm
P1A-4CMB	10
P1A-4DMB	12, 16
P1A-4HMB	20, 25

P1A-MF - MS3 Foot bracket

2



45 Parker DirectLink

Part number	Cylinder bore mm
P1A-4CMF	10
P1A-4DMF	12, 16
P1A-4HMF	20, 25

P1A-MT - Clevis bracket



45 Parker DirectLink

Part number	Cylinder bore mm
P1A-4CMT	10
P1A-4DMT	12, 16
P1A-4HMT	20, 25

P8S - Sensor mounting for P1A Mini ISO cylinders



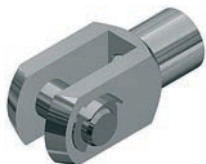
45 Parker DirectLink

Part number	Details	Weight kg
P8S-TMC01	Sensor mounting for cylinder P1A bore 10 - 25 mm	0.07

PNEUMATICS



P1C-RC - Rod clevis - ISO 8140



45 Order DirectLink

Part number	Rod end	Cylinder bore mm
P1C-4KRC	M10x1.25	32
P1C-4LRC	M12x1.25	40
P1C-4MRC	M16x1.5	50
P1C-4MRC	M16x1.5	63
P1C-4PRC	M20x1.5	80
P1C-4PRC	M20x1.5	100

P1C-RS - Swivel rod eye - ISO 8139



45 Order DirectLink

Part number	Rod end	Cylinder bore mm
P1C-4KRS	M10x1.25	32
P1C-4LRS	M12x1.25	40
P1C-4MRS	M16x1.5	50
P1C-4MRS	M16x1.5	63
P1C-4PRS	M20x1.5	80
P1C-4PRS	M20x1.5	100

P1C-MB - MF1/MF2 Flange



45 Order DirectLink

Part number	Cylinder bore mm
P1C-4KMB	32
P1C-4LMB	40
P1C-4MMB	50
P1C-4NMB	63
P1C-4PMB	80
P1C-4QMB	100

P1C-MF - MS1 Foot Bracket



45 Order DirectLink

Part number	Cylinder bore mm
P1C-4KMF	32
P1C-4LMF	40
P1C-4MMF	50
P1C-4NMF	63
P1C-4PMF	80
P1C-4QMF	100



- Description: • Hydraulic Industrial Shock Absorbers.
- Adjustability: • Adjustable / non adjustable.
- Masses: • Small / intermediate / large.
- Basic Version: • Integral stop collar, 1 mounting nut, soft pad.
- Accessories: • Universal flange.
- Advantages: • Increase operating speeds / loads, overall system performance and operating reliability.
- Benefits: • Reduce stress on equipment, production cost and noise level.

Shock Absorbers, non adjustable



157 Parker DirectLink

Part number	Type	Stroke	Thread	Effective Mass me (kg)		Max. Energy Absorption Nm	
				min.	max.	per stroke W ₃	per hour W ₄
7717	SA10N	6.5	M10x1	0.7	2.2	2.8	22500
7718	SA10SN	6.5	M10x1	1.8	5.4	2.8	22500
7721	SA10S2N	6.5	M10x1	4.6	13.6	2.8	22500
7719	SA12N	10	M12x1	0.3	1.1	9.0	28200
7722	SA12SN	10	M12x1	0.9	4.8	9.0	28200
7723	SA12S2N	10	M12x1	2.7	36.2	9.0	28200
7920	SA14	12.5	M14x1.5*	0.9	10	17	34000
7927	SA14S	12.5	M14x1.5*	8.6	86	17	34000
7928	SA14S2	12.5	M14x1.5*	68	205	17	34000
7930	SA20	12.5	M20x1.5	2.3	25	25	45000
7937	SA20S	24.6	M20x1.5	2.3	16	50.8	68000
7938	SA20S2	12.5	M20x1.5	23	230	25	45000
7700	SA20x25	24.6	M20x1.5	9	59	50.8	68000
7701	SA20Sx25	12.5	M20x1.5	182	910	25	45000
7702	SA20S2x25	24.6	M20x1.5	36	227	50.8	68000
7834	SAI25	25.4	M25x1.5	9	136	68	68000
7835	SAI25S	25.4	M25x1.5	113	1130	68	68000
7836	SAI25S2	25.4	M25x1.5	400	2273	68	68000

*Option: M14x1

Shock Absorbers, adjustable

157 Parker DirectLink

Part number	Type	Stroke	Thread	Effective Mass me (kg)		Max. Energy Absorption Nm	
				min.	max.	per stroke W ₃	per hour W ₄
7720	SA1/4x1/2N	12.7	M20x1.5	1.0	190	20	35000
7840	SA3/8x1D	25.4	M25x1.5*	4.5	546	70	68000

*Option: M27x3



Shock Absorber Accessories - Plastic Cover

Part number	Type	To be used with
7914	SP12	SA12
7924	SP14	SA14/S/S2
7934	SP20	SA20/S/S2
7934	SP20	SA1/4x1/2
7954	SP25	SA25/S/S2
7954	SP25	SA3/8x1D
7837	SP125	SA125
	integrated	SA10
	integrated	SA10S

157 Parker DirectLink

Description:	<ul style="list-style-type: none"> Hydraulic Industrial Shock Absorbers.
Adjustability:	<ul style="list-style-type: none"> Adjustable / non adjustable.
Masses:	<ul style="list-style-type: none"> Small / intermediate / large.
Basic Version:	<ul style="list-style-type: none"> Integral stop collar, 1 mounting nut, soft pad.
Accessories:	<ul style="list-style-type: none"> Universal flange.
Advantages:	<ul style="list-style-type: none"> Increase operating speeds / loads, overall system performance and operating reliability.
Benefits:	<ul style="list-style-type: none"> Reduce stress on equipment, production cost and noise level.

Shock Absorber Accessories - Mounting Nut

Part number	Type	To be used with
7909	LN10	SA10
7909	LN10	SA10S
7919	LN12	SA12
7929	LN14	SA14/S/S2
7939	LN20	SA20/S/S2
7939	LN20	SA1/4x1/2
7959	LN25	SA125/S/S2
7959	LN25	SA3/8x1D

157 Parker DirectLink

ULTIMATE PRECISION FOR A LONG LONG TIME



Parker Origa

Working outside in harsh conditions with a high level of accuracy, long service life and very low leakage... if this meets your needs, look no further!

Parker Origa pneumatic cylinders can run over 8,000 kms without maintenance, reducing your operating costs and improving the reliability of your equipment.

For more information or to locate your nearest ParkerStore, visit www.parkerstore.com.



Apex Fluid Power Ltd.

Phone: 01228 511157

www.apexfluid.co.uk

